

Submersible Water Pump

PORTABLE ELECTRIC PUMP CLEANER

Easy and convenient to replace water!



MODEL. TRAQUA

PORTABLE REPLACING WATER PUMP FOR VARIOUS USES.

**IDEAL FOR DRAINING AND SUPPLYING WATER FROM AQUARIUM, POOL, BATHRUB, BASEMENT, ETC.
FOR BOTH INDOOR AND OUTDOOR USES. GREAT FOR FILTERING DIRTY WATER AND RECYCLING.**

- For your safety during use, please read below carefully. Improper use may cause serious accidents related to lives, fish, and equipment.
- Following lists of symbols subject to orders will help prevent you and others from getting hurt or into serious accidents. Also, in order for you to recognize how dangerous and important it is, the symbols are identified by 2 different symbols, "warning", and "attention".
- For your safety, please obey all relevant orders and directions.



"WARNING" THIS MAY CAUSE DEATH AND SERIOUS INJURY.



"CAUTION" THIS MAY CAUSE A LITTLE INJURY OR PROPERTY DAMAGE.

Examples of warning symbols.



△ THIS SYMBOL IS TO CALL ON YOU TO BE WARNED AND TAKE ATTENTION. THE SYMBOL DESCRIBES ITSELF. (MEANING: ELECTRIC SHOCK. LEFT FIGURE)



⊘ THIS SYMBOL IS TO NOTIFY YOU TO "DO NOT DO THIS". THE SYMBOL DESCRIBES ITSELF. (MEANING: DO NOT USE WET HANDS. LEFT FIGURE)



● THIS SYMBOL GIVES DIRECTIONS TO YOU. THE SYMBOL DESCRIBES ITSELF. (MEANING: IT GIVES DIRECTIONS TO UNSPECIFIED USERS OR THIRD PARTIES. LEFT FIGURE.)
PLEASE KEEP THESE INSTRUCTIONS FOR YOUR SAFETY.

⚠ WARNING

 <ul style="list-style-type: none"> ● If the power supply adapter falls into the water, pull the plug out and do not reuse it. ○ It may become the cause of ignition and/or electric shock. 	 <ul style="list-style-type: none"> ● Do not use outdoors. Also, keep pump out of direct sunlight, water vapor, soft coal, dust, and damp air etc. ○ It may become the cause of ignition and/or electric shock. 	 <ul style="list-style-type: none"> ● Do not allow children to operate and/or set up pump without adult supervision. ○ It may become the cause of ignition and/or electric shock.
 <ul style="list-style-type: none"> ● You must unplug any electronic devices in use for your aquarium tank when setting up the pump system, put fish in or take fish out, and clean out the aquarium. ○ It may become the cause of ignition and/or electric shock. 	 <ul style="list-style-type: none"> ● Do not use when the cable and plug is damaged or if plug is loose on outlet. ○ It may become the cause of ignition, short circuit, and/or electric shock. 	 <ul style="list-style-type: none"> ● Do not alter or disassemble the pump. ○ It may become the cause of ignition, electric shock, and/or malfunction.
 <ul style="list-style-type: none"> ● Do not touch and operate any plug or power supply adapter with wet hands. ○ It may become the cause of electric shock. 	 <ul style="list-style-type: none"> ● Do not get the power cord damaged, bent, pulled, twisted, or bound. ○ It may become the cause of ignition or electric shock. 	 <ul style="list-style-type: none"> ● In any case, do not get the plug and outlet wet whether in or not in use. ○ It may become the cause of ignition and/or electric shock.
 <ul style="list-style-type: none"> ● Do not use any other power sources besides AC100V. ○ It may become the cause of ignition. 	 <ul style="list-style-type: none"> ● Do not use any other power sources besides AC100V. ○ It may become the cause of ignition. 	 <ul style="list-style-type: none"> ● Wash and clean out the outlet, plug, and plug blades regularly. ○ It may become the cause of ignition. ● Do not use it with sea water. ○ It may become the cause of ignition.

⚠ CAUTION

 <ul style="list-style-type: none"> ● This pump is made only for aquarium fish tanks. Do not use it for other purposes. (Operating time is not to exceed 10 mins each use) ○ It may become the cause of fire, electric shock, and accidents. 	 <ul style="list-style-type: none"> ● Do not get it covered by anything. ○ It may become the cause of a breakdown, fire, or heat disturbance. ● Do not run dry. ○ It may become the cause of a breakdown. 	 <ul style="list-style-type: none"> ● When unplugging, pull from the plug not the cable. ○ It may become the cause of short circuit, electric shock, or ignition.
 <ul style="list-style-type: none"> ● Do not have the pump dropped or knocked over. Also do not make the power cord tense. ○ It may become the cause of breakdown or fire. ● Do not exceed 10 minutes each use. 	 <ul style="list-style-type: none"> ● Use it in a well-ventilated area since the power supply adaptor becomes a little hot. ○ It may become the cause of a breakdown. ● Rinse the filter with water after use. ○ It may become the cause of a breakdown. ● Do not use it with water above 45 degrees celcius. ○ It may become the cause of a breakdown. 	 <ul style="list-style-type: none"> ● When aeration is going on in the aquarium, keep the pump from the air. ○ It will not transfer the water if the pump sucks in air. ● Be alert that the water may keep flowing out due to the siphoning even after being switched off.

SUBMERSIBLE WATER PUMP

PORTABLE**ELECTRIC****FILTERING****MODEL. TRAQUA**

SAVE THESE INSTRUCTIONS. READ ALL PRECAUTIONS AND INSTRUCTIONS.



WWW.TERPUMP.NET
TERAPUMP@GMAIL.COM
1.877.251.2288
1941 E OCCIDENTAL ST
SANTA ANA CA 92705 USA

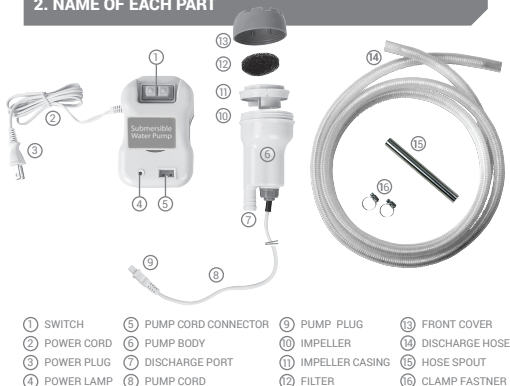


EASY & CONVENIENT TO REPLACE WATER **INSTRUCTIONS**

1. MAIN PURPOSES OF THIS PRODUCT

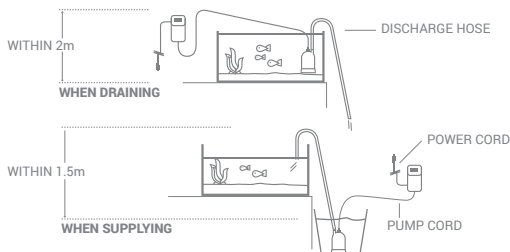
- **REMOVING WATER** from window wells, basements, boats, inflatables, trays, washing machines, etc.
- **REPLACING WATER** from ponds, aquarium, bathtubs, pools and other water storage structures to keep water circulating.
- **FILTERING DIRTY WATER OR RAINWATER.** Recycling filtered water for multi-purposes.

2. NAME OF EACH PART



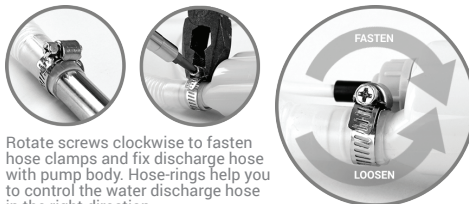
3. HOW TO USE & PRECAUTIONS

- 1 Make sure to use a discharge hose within 15mm thick.
- 2 Make sure to use a discharge hose within 10m long.
- 3 Make sure to place the discharge hose above the water level in the water storage.
- 4 When draining, you can raise the discharge hose up to 2m high from the level of water where you placed the pump.
- 5 When supplying, you can raise the discharge hose up to 1.5m high maximum from the level of water in the supply tank where you placed the pump.



- When supplying, be especially careful with ③ and ⑤.
 - After submersing the pump, turn the switch on and use it, otherwise it may cause malfunction. (If switch is on first, it may not pump water out)
- 6 If you slip the power supply adaptor into water, first make sure to switch off and remove the end of the power supply and do not reuse it.
 - 7 Make sure to empty the remaining water in the hose, otherwise the pump will not discharge water next time.
 - 8 When cleaning up the pump, do not use thinner, benzene, organic solvent, or glass cleaners.
 - 9 When disposing of pump, make sure to have it completely destroyed so that others won't use it again.
 - 10 When you hand it over to another person, be sure to give them the instructions too.

HOW TO STABILIZE DISCHARGE HOSE



Rotate screws clockwise to fasten hose clamps and fix discharge hose with pump body. Hose-rings help you to control the water discharge hose in the right direction.

HOW TO MAINTAIN AFTER USE

- 1 Make sure to hold on the plug and pull it out from the outlet. (Do not pull off the cable)
- 2 After use, empty the water in the discharge hose. (Completely remove the water inside the hose)
- 3 Clean up the front cover and filter with water. (Turn the front cover open to the left)

SPECIFICATIONS

ITEM #	TRAQUA	AVAILABLE TEMP RANGE	AMBIENT AIR TEMP: 5~35°C WATER TEMP: 5~45°C
APPLICATION	SUBMERSIBLE ELECTRIC WATER PUMP		
INPUT	100V 50/60Hz 22VA		
OUTPUT	DC 12V 0.8A	FLOW RATE	0m FROM THE GROUND: 12 LITERS/MIN 1m FROM THE GROUND: 8 LITERS/MIN 1.5m FROM THE GROUND: 7 LITERS/MIN
PROTECTIVE DEVICE	TEMPERATURE FUSE		
LENGTH OF CORD	0.9m FROM POWER SUPPLY ADAPTOR, 2.9m FROM PUMP BODY.	MAX AVAIL. HEIGHT	2.6m FROM THE GROUND
SIZE	POWER SUPPLY ADAPTOR: W67 X D56 X H100 (mm) PUMP BODY 58 (diameter) X 116mm DISCHARGE HOSE 15 (diameter) X 29794mm	APPLICABLE DISCHARGE HOSE	INNER DIAMETER 1.5mm
		LIFE SPAN	ABOUT 500 HOURS (CONDITION: OPERATING INTERVAL TIME 15MIN)

**HOW FLOW RATE WAS MEASURED: 3m HOSE USED.
THE DISTANCE FROM THE WATER SUPPLY SHOULD BE 2m.**